



GMT MONTHLY MEMBERSHIP PROGRESS REPORT

Results as of: 5/31/2020

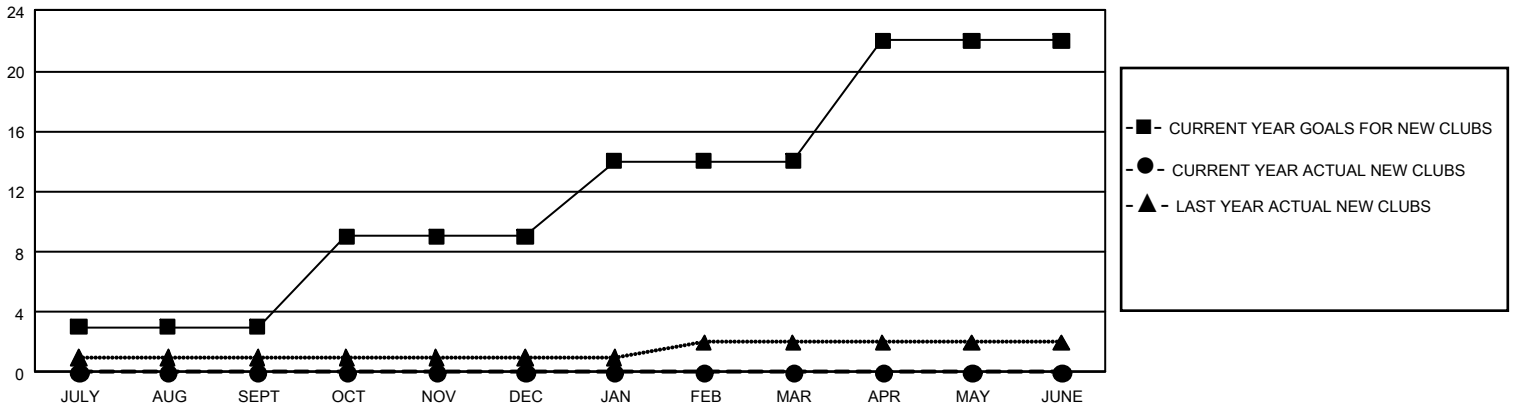
GMT Constitutional Area 1, Group H

GMT: OPEN

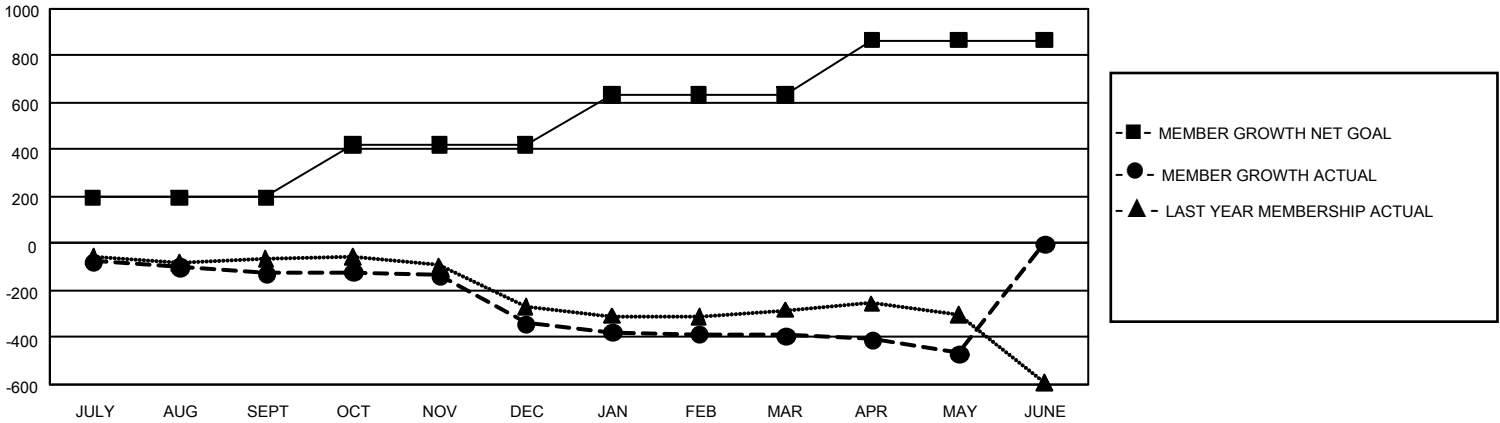
REPORT DOES NOT INCLUDE CLUBS IN UNDISTRICTED AREAS.

Clubs				Members			
RESULTS FOR 2019-2020				RESULTS FOR 2019-2020			
QUARTER	NEW CLUB GOAL	NEW CLUBS	DROPPED CLUBS	QUARTER	MEMBER GROWTH NET GOAL	MEMBER GROWTH ACTUAL	DROPPED MEMBERS ACTUAL (including transfers)
JULY/AUG/SEPT	9	0	3	JULY/AUG/SEPT	588	256	320
OCT/NOV/DEC	18	0	6	OCT/NOV/DEC	669	228	420
JAN/FEB/MAR	15	0	3	JAN/FEB/MAR	648	291	301
APR/MAY/JUNE	24	0	1	APR/MAY/JUNE	693	63	120

GOALS AND ACTUAL NEW CLUBS CUMULATIVE



GOALS AND ACTUAL MEMBERS CUMULATIVE



DROPPED CLUBS: 13	225 CLUBS OF 416 ADDED 1 OR MORE NEW MEMBERS	<u>GENDER DISTRIBUTION</u> MALE 6,334 (62.78%) FEMALE 3,755 (37.22%)
<u>DROPPED MEMBERS</u> DECEASED 148 CLUB CANCELLED 19 OTHER 993 <hr/> TOTAL 1,160	CLICK HERE FOR CUMULATIVE MEMBERSHIP DATA	TOTAL FAMILY UNIT MEMBERS 2,502 FAMILY MEMBERS PAYING HALF DUES 1,282